

ROTOMECH

HURRICANE 'H70'

Trinciaerba ad asse orizzontale

Flail mower

Faucheuse rotative

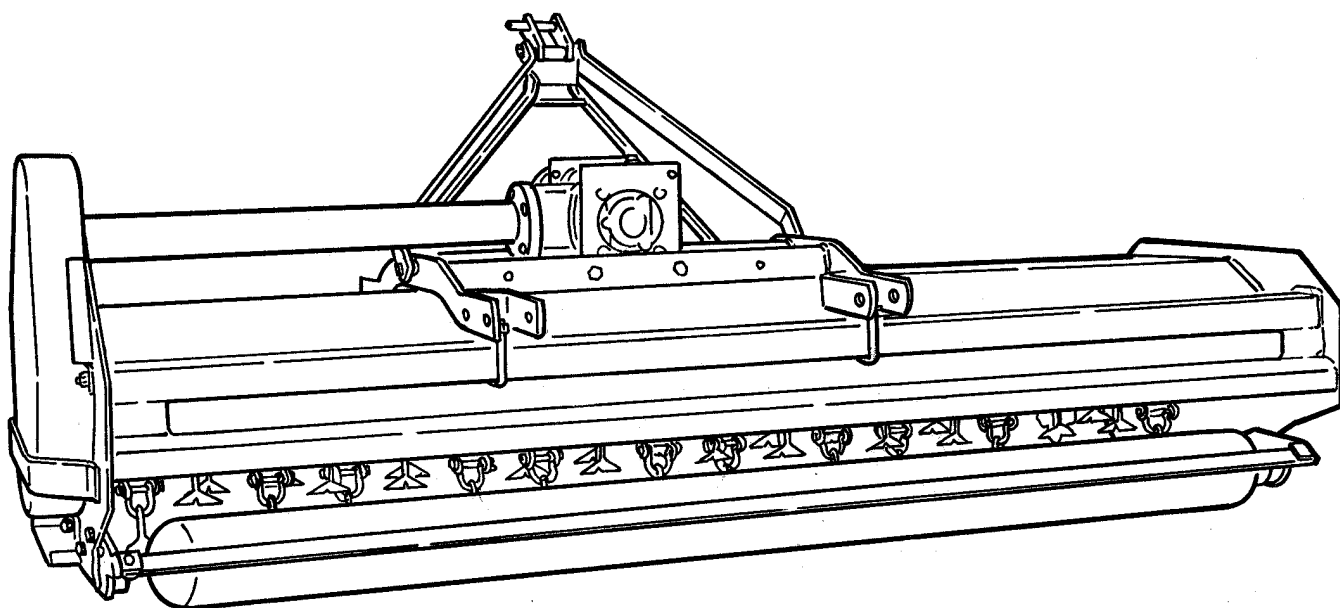
Mähschlegel

▶ Gearbox

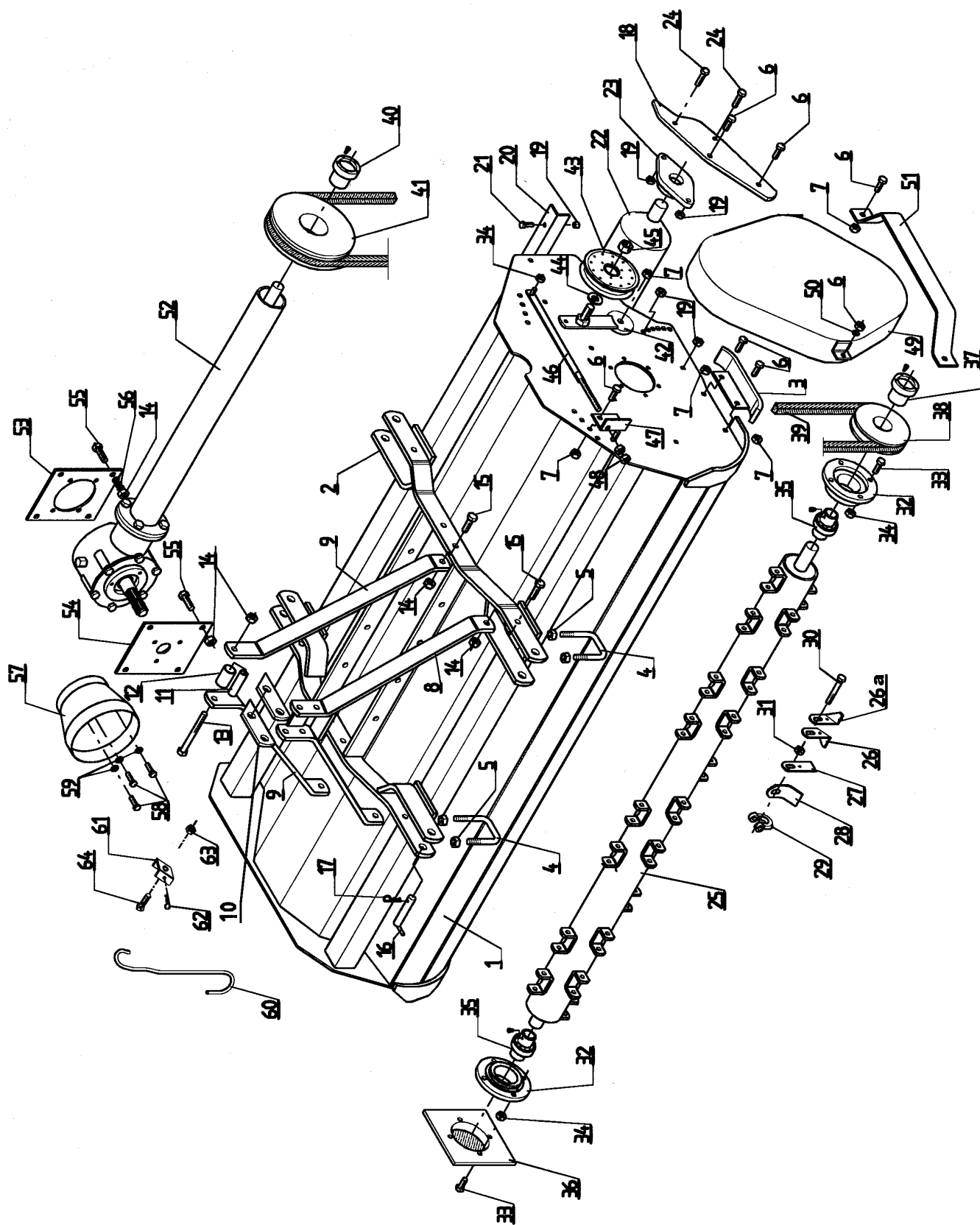
▶ Frame

▶ Driveline

▶ Gauge Wheel



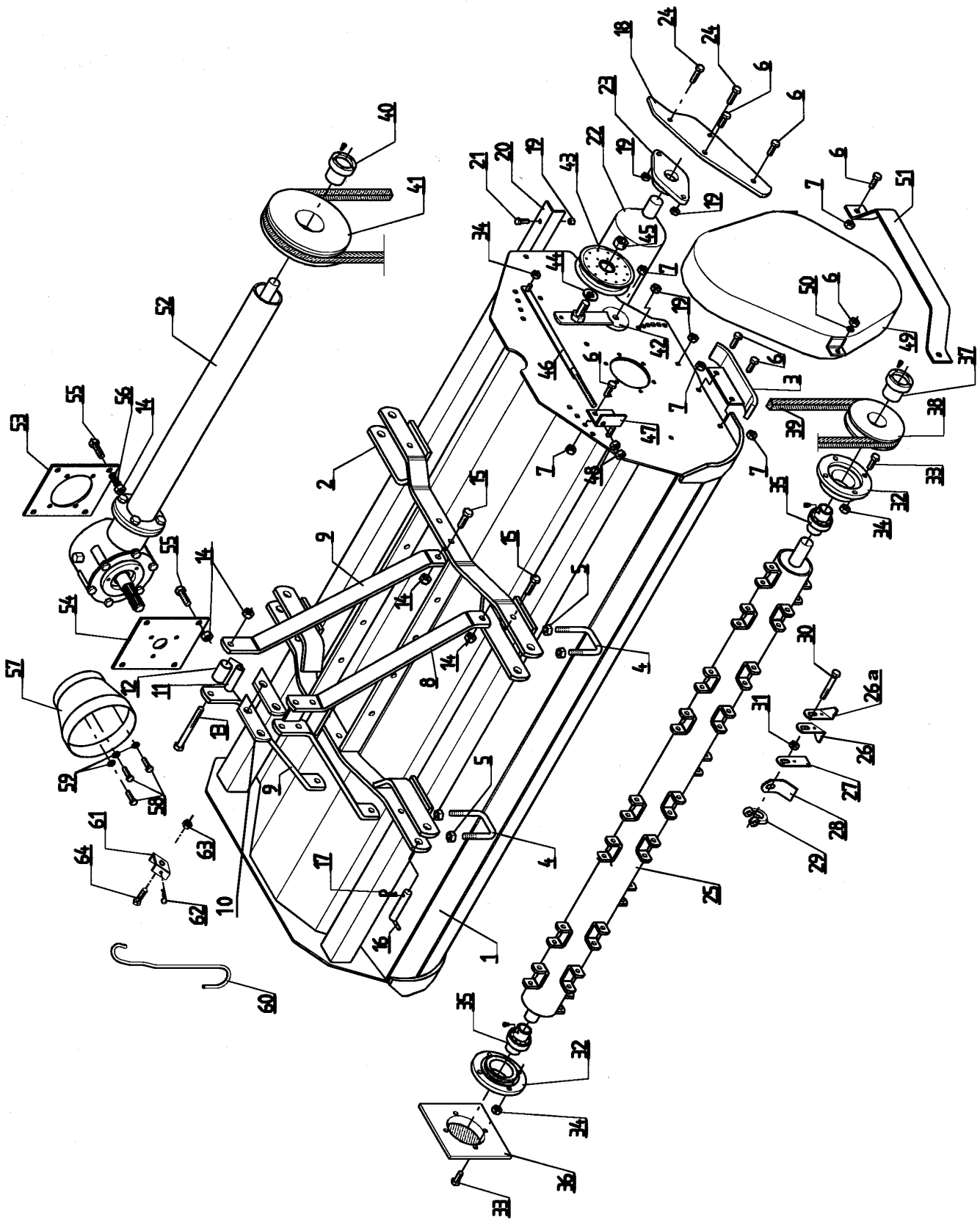
Rotomec: Hurricane 'H70'



Rotomec: Hurricane 'H70'

N.	COD.	DESCRIZIONE	DESCRIPTION	DESCRIPTION	BESCHREIBUNG	N.
1	0153002	Telaio v.190	Frame v.190	Châssis v.190	Rahmen v.190	1
	0253002	Telaio v.225	Frame v.225	Châssis v.225	Rahmen v.225	1
2	0053021	Supporto scatola	Gearbox stand	Support boîtier	Kastenhalterung	1
3	0053015	Slitta	Skid	Patin	Schlitten	2
4	0053031	Cavallotto	U bolt	Barre d'ancrage	Bügelbolzen	4
5	0007224	Dado autobloccante D.14	Locking nut D.14	Ecrou autobloquant D.14	Mutter D.14	8
6	0015255	Vite TE 12x30	Bolt TE 12x30	Vis TE 12x30	Schraube TE 12x30	13
7	0030064	Dado D.12	Nut D.12	Ecrou D.12	Mutter D.12	8
8	0053036	Attacco 3° punto	Three point hitch	Attache 3 ^{ème} point	Ankupplung für oberen Lenker	1
9	0053042	Lama inclinata	Top hitch arm	Lame inclinée	Geneigte Strebe	2
10	0053045	Piastra superiore	Upper plate	Plaque supérieure	Obere Platte	2
11	0006898	Distanziale interno	Inner spacer	Entretoise interne	Innendistanzstück	1
12	0006558	Distanziale esterno	Outer spacer	Entretoise externe	Außendistanzstück	1
13	0006615	Vite TE 14x140	Bolt TE 14x140	Vis TE 14x140	Schraube TE 14x140	1
14	0030358	Dado D.14	Nut D.14	Ecrou D.14	Mutter D.14	9
15	0074232	Vite TE 14x40	Bolt TE 14x40	Vis TE 14x40	Schraube TE 14x40	4
16	0038346	Spina	Hitch pin	Cheville	Zapfen	2
17	0091507	Copiglia a molla D.4	Cotter pin D.4	Goupille ressort D.4	Federsplint D.4	2
18	0153091	Braccio rullo destro	Right roller arm	Bras du rouleau droit	Rechter Walzenarm	1
	0253091	Braccio rullo sinistro	Left roller arm	Bras du rouleau gauche	Linker Walzenarm	1
	0353091	Braccio rullo destro-10/07/97	Right roller arm-10/07/97	Bras du rouleau droit-10/07/97	Rechter Walzenarm- 10/07/97	1
	0453091	Braccio rullo sinistro-10/07/97	Left roller arm-10/07/97	Bras du rouleau gauche-10/07/97	Linker Walzenarm-10/07/97	1
19	0013345	Dado autobloccante D.12	Locking nut D.12	Ecrou autobloquant D.12	Mutter D.12	10
20	0153101	Raschiarullo v.190	Roller scraper v.190	Racleur rouleau v.190	Walzenschaber v.190	1
	0253101	Raschiarullo v.225	Roller scraper v.225	Racleur rouleau v.225	Walzenschaber v.225	1
21	0003037	Vite TE 12x25	Bolt TE 12x25	Vis TE 12x25	Schraube TE 12x25	2
22	0153111	Rullo v.190	Roller v.190	Rouleau v.190	Walze v.190	1
	0253111	Rullo v.225	Roller v.225	Rouleau v.225	Walze v.225	1
23	0037514	Supporto UCFL 206 TF	Support UCFL 206 TF	Palier UCFL 206 TF	Support UCFL 206 TF	2
24	0023265	Vite TE 12x40	Bolt TE 12x40	Vis TE 12x40	Schraube TE 12x40	4
25	0153130	Rotore v.190	Rotor v.190	Rotor v.190	Rotor v.190	1
	0253130	Rotore v.225	Rotor v.225	Rotor v.225	Rotor v.225	1
26	0152124	Coltello destro	Right blade	Couteau droit	Rechtes Messer	-
26a	0252124	Coltello sinistro	Left blade	Couteau gauche	Linkes Messer	-
27	0052126	Coltello rigenatore	Detaching blade	Couteau régénérateur	Neugestaltermesser	-
28	0051118	Coltellino	Knife	Couteau	Messer	-
29	0050106	Cavallotto per coltello	U bolt	Barre d'ancrage	Bügelbolzen für Messer	-
30	0050107	Vite TE 7/16 x 80 UNF	Bolt TE 7/16 x 80 UNF	Vis TE 7/16 x 80 UNF	Schraube TE 7/16 x 80 UNF	-
31	0050108	Dado D. 7/16 UNF	Nut D. 7/16 UNF	Ecrou D. 7/16 UNF	Mutter D. 7/16 UNF	-
32	0053153	Supporto rotore	Rotor support	Palier rotor	Rotorauflage	2

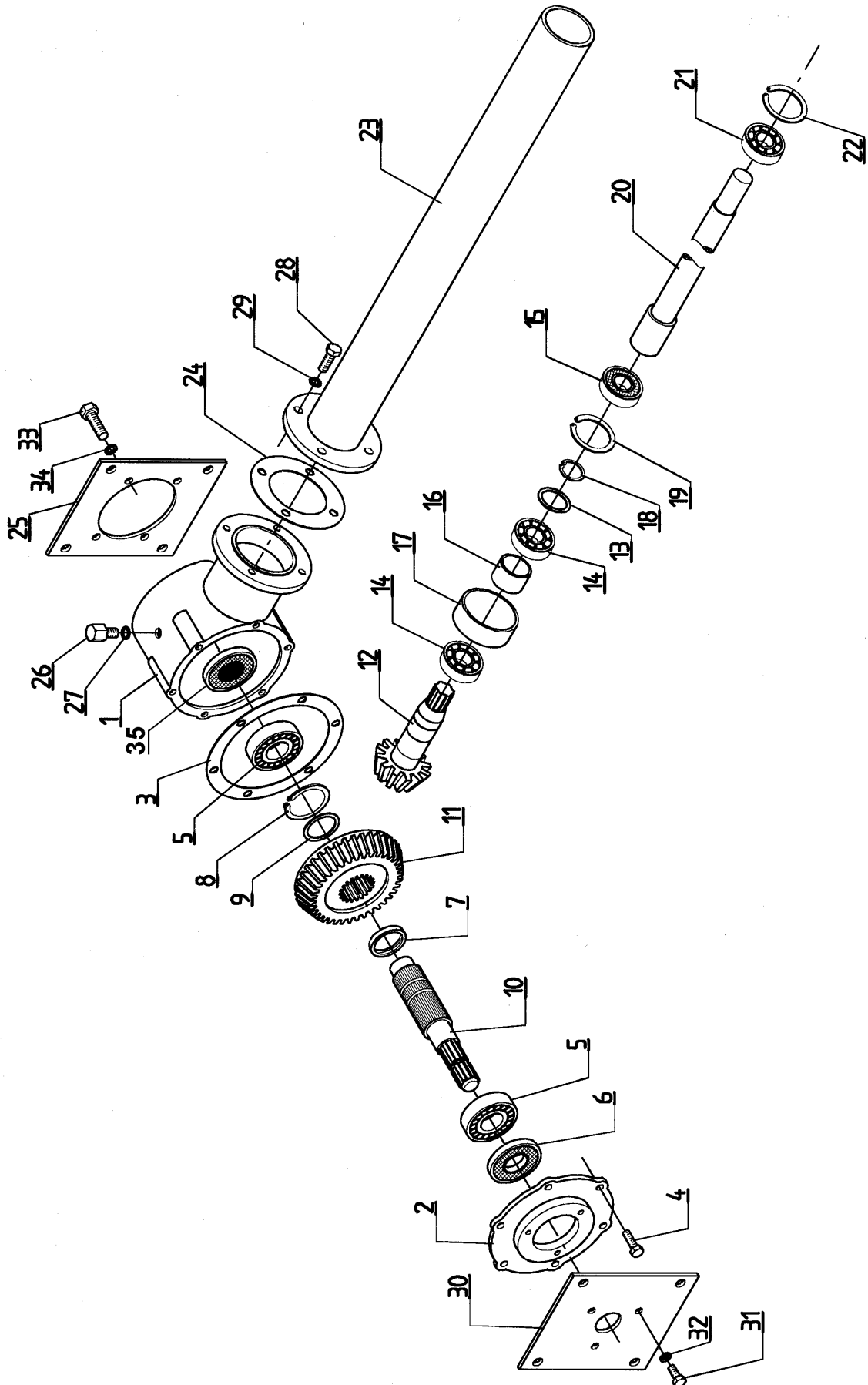
Rotomec: Hurricane 'H70'



Rotomec: Hurricane 'H70'

N.	COD.	DESCRIZIONE	DESCRIPTION	DESCRIPTION	BESCHREIBUNG	N.
33	0091281	Vite TE 10x35	Bolt TE 10x35	Vis TE 10x35	Schraube TE 10x35	12
34	0030156	Dado D.10	Nut D.10	Ecrou D.10	Mutter D.10	13
35	0053156	Cuscinetto YAR 209-2RF	Bearing YAR 209-2RF	Roulement YAR 209-2RF	Lager YAR 209-2RF	2
36	0053160	Coperchiella riparo	Protection	Couvercle	Schutzhaube	1
37	0053162	Calettatore D.40 x 65	Split lock bushing D.40 x 65	Dispositif de joint D.40 x 65	Keilvorrichtung D.40 x 65	1
38	0053163	Puleggia SPC 180x1	Pulley SPC 180x1	Poulie SPC 180x1	Scheibe SPC 180x1	1
39	0053166	Cinghia CX 52	Belt CX 52	Courroie CX 52	Keilriemen CX 52	1
40	0053167	Calettatore D.30 x 65	Split lock bushing D.30 x 65	Dispositif de joint D.30 x 65	Keilvorrichtung D.30 x 65	1
41	0053169	Puleggia SPC 225x1	Pulley SPC 225x1	Poulie SPC 225x1	Scheibe SPC 225x1	1
42	0053191	Supporto galoppino	Pulley support	Support tendeur courroie	Leitrollenlager	1
43	0008561	Puleggia tendicinghia	Belt tensioner pulley	Poulie tendeuse	Riemenscheibenspanner	1
44	0046555	Rondella piana D.20	Flat washer D.20	Rondelle plate D.20	Flache Scheibe D.20	1
45	0005507	Dado D.20	Nut D.20	Ecrou D.20	Mutter D.20	1
46	0053186	Tirante completo	Tie rod	Tirant complet	Kompletter Zugbolzen	1
47	0053196	Angolare di fissaggio	Fixing angle bar	Cornière de fissage	Befestigungswinkel	1
48	0001106	Dado D.12	Nut D.12	Ecrou D.12	Mutter D.12	2
49	0053208	Coperchio carter	Chain case cover	Carter d'engrenages	Gehäuseabdeckung	1
50	0002265	Rondella piana D.12	Flat washer D.12	Rondelle plate D.12	Flache Scheibe D.12	2
51	0053213	Protezione per carter	Chain case cover protection	Carter d'engrenages pour protection	Gehäuseschutz	1
52	0053404	Gruppo scatola	Gearbox	Boîtier	Gehäusegruppe	1
53	0053442	Lamiera posteriore	Rear plate	Tôle postérieure	Hinteres Blech	1
54	0053277	Lamiera anteriore scatola	Gearbox front cover	Couvercle	Gehäusevorderblech	1
55	0037349	Vite TE 14x45	Bolt TE 14x45	Vis TE 14x45	Schraube TE 14x45	4
56	0091435	Rondella piana D.14	Flat washer D.14	Rondelle plate D.14	Flache Scheibe D.14	6
57	0008663	Protezione cardano	Shaft protection	Protection arbre	Kardangelenschutz	1
58	0006349	Vite TE 10x20	Bolt TE 10x20	Vis TE 10x20	Schraube TE 10x20	3
59	0001280	Rosetta elastica D.10	Spring washer D.10	Rondelle élastique D.10	Sprengring D.10	3
60	0022433	Gancio sostegno cardano	Driveline hook	Crochet	Kardangelenkstützhaken	1
61	0022435	Fissaggio per gancio	Hook support	Arrêt pour levier	Fixierung für Haken	1
62	0054422	Copiglia a molla D.2	Cotter pin D.2	Goupille D.2	Federsplint D.2	1
63	0001806	Dado D.8	Nut D.8	Ecrou D.8	Mutter D.8	1
64	0091446	Vite TE 8x25	Bolt TE 8x25	Vis TE 8x25	Schraube TE 8x25	1

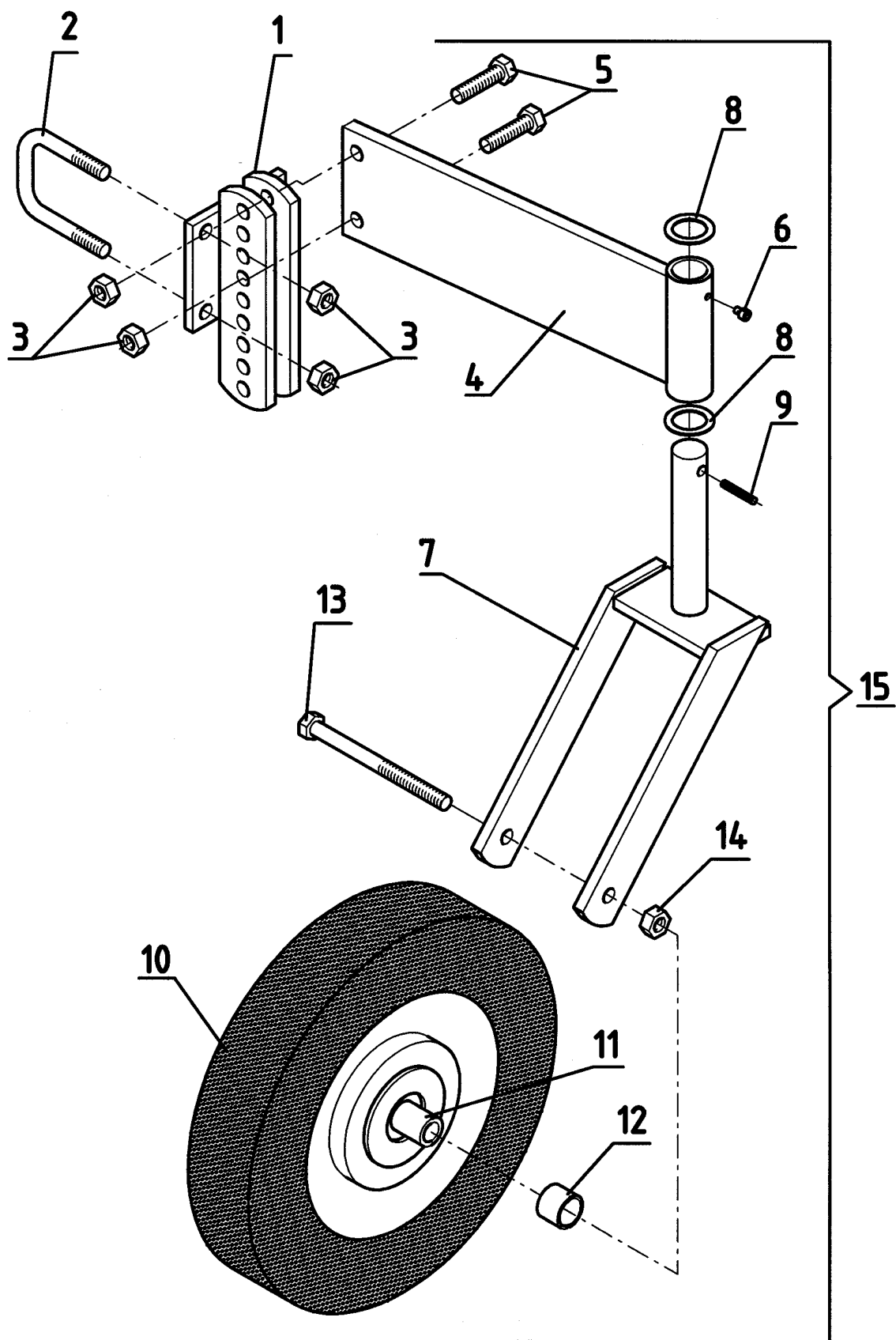
Rotomec: Hurricane 'H70', 540 rpm



Rotomec: Hurricane 'H70', 540 rpm

N.	COD.	DESCRIZIONE	DESCRIPTION	DESCRIPTION	BESCHREIBUNG	N.
1	0053405	Scatola ingranaggi	Gearbox	Boîtier	Getriebekasten	1
2	0053409	Coperchiella corona	Gear cover	Couvercle couronne	Kranzhaube	1
3	0180206	Guarnizione ² / ₁₀	Gasket ² / ₁₀	Joint d'étanchéité ² / ₁₀	Dichtung ² / ₁₀	-
	0280206	Guarnizione ⁵ / ₁₀	Gasket ⁵ / ₁₀	Joint d'étanchéité ⁵ / ₁₀	Dichtung ⁵ / ₁₀	-
4	0033176	Vite TE 10x25	Bolt TE 10x25	Vis TE 10x25	Schraube TE 10x25	6
5	0001061	Cuscinetto 6307	Bearing 6307	Roulement 6307	Lager 6307	2
6	0030211	Paraolio 35.72.10	Oil seal 35.72.10	Pare-huile 35.72.10	Simmering 35.72.10	1
7	0053241	Distanziale anteriore	Front spacer	Entretoise antérieur	Vorderes Distanzstück	1
8	0012028	Seeger esterno D.45	Outer snap ring D.45	Circlip externe D.45	Außenseegerring D.45	1
9	0053240	Anello di spessoramento	Spacer washer	Anneau d'épaisseur	Distanzring	1
10	0053244	Albero P.D.F.	Input shaft	Arbre P.D.F.	Zapfwelle	1
11	0053282	Corona conica	Ring gear	Couronne conique	Tellerrad	1
12	0053283	Pignone conico	Pinion gear	Pignon conique	Kegelrad	1
13	0053248	Anello di spessoramento	Spacer washer	Anneau d'épaisseur	Distanzring	1
14	0001148	Cuscinetto 6308	Bearing 6308	Roulement 6308	Lager 6308	2
15	0054290	Paraolio 40.90.8 BASL	Oil seal 40.90.8 BASL	Pare-huile 40.90.8 BASL	Simmering 40.90.8 BASL	1
16	0053253	Distanziale	Spacer	Entretoise	Distanzstück	1
17	0053257	Distanziale	Spacer	Entretoise	Distanzstück	1
18	0008138	Seeger esterno D.40	Outer snap ring D.40	Circlip externe D.40	Außenseegerring D.40	1
19	0008137	Seeger interno D.90	Inner snap ring D.90	Circlip interne D.90	Innenseegerring D.90	1
20	0053265	Albero trasversale	Drive shaft	Arbre transversal	Querwelle	1
21	0050212	Cuscinetto 6306-2RS	Bearing 6306-2RS	Roulement 6306-2RS	Lager 6306-2RS	1
22	0025329	Seeger interno D.72	Inner snap ring D.72	Circlip interne D.72	Innenseegerring D.72	1
23	0053261	Tubo trasversale	Tube drive shaft	Tube transversal	Querrohr	1
24	0053259	Guarnizione	Gasket	Joint d'étanchéité	Dichtung	-
	0153259	Guarnizione	Gasket	Joint d'étanchéité	Dichtung	-
25	0053442	Lamiera posteriore	Rear plate	Tôle postérieure	Hinteres Blech	1
26	0001107	Sfiatatoio	Breather cap	Bouchon d'huile	Gehäuseentlüfter	1
27	0006691	Guarnizione	Gasket	Joint d'étanchéité	Dichtung	1
28	0015255	Vite TE 12x30	Bolt TE 12x30	Vis TE 12x30	Schraube TE 12x30	4
29	0001067	Rosetta elastica D.12	Spring washer D.12	Rondelle élastique D.12	Sprengring D.12	4
30	0053277	Lamiera anteriore scatola	Gearbox front cover	Couvercle antérieur boîtier	Gehäusevorderblech	1
31	0006349	Vite TE 10x20	Bolt TE 10x20	Vis TE 10x20	Schraube TE 10x20	3
32	0001280	Rosetta elastica D.10	Spring washer D.10	Rondelle élastique D.10	Sprengring D.10	3
33	0064648	Vite TE 12x20	Bolt TE 12x20	Vis TE 12x20	Schraube TE 12x20	4
34	0002265	Rondella piana D.12	Flat washer D.12	Rondelle plate D.12	Flache Scheibe D.12	4
35	0053421	Tappo	Cap	Bouchon d'huile	Deckel	1

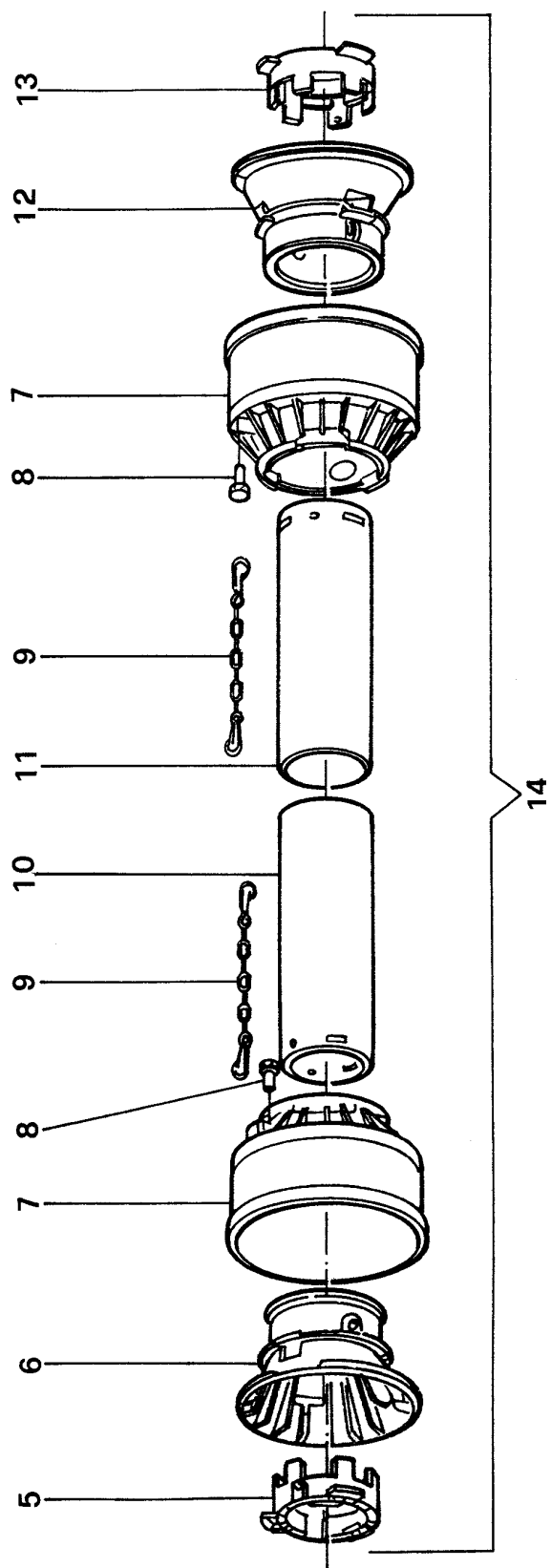
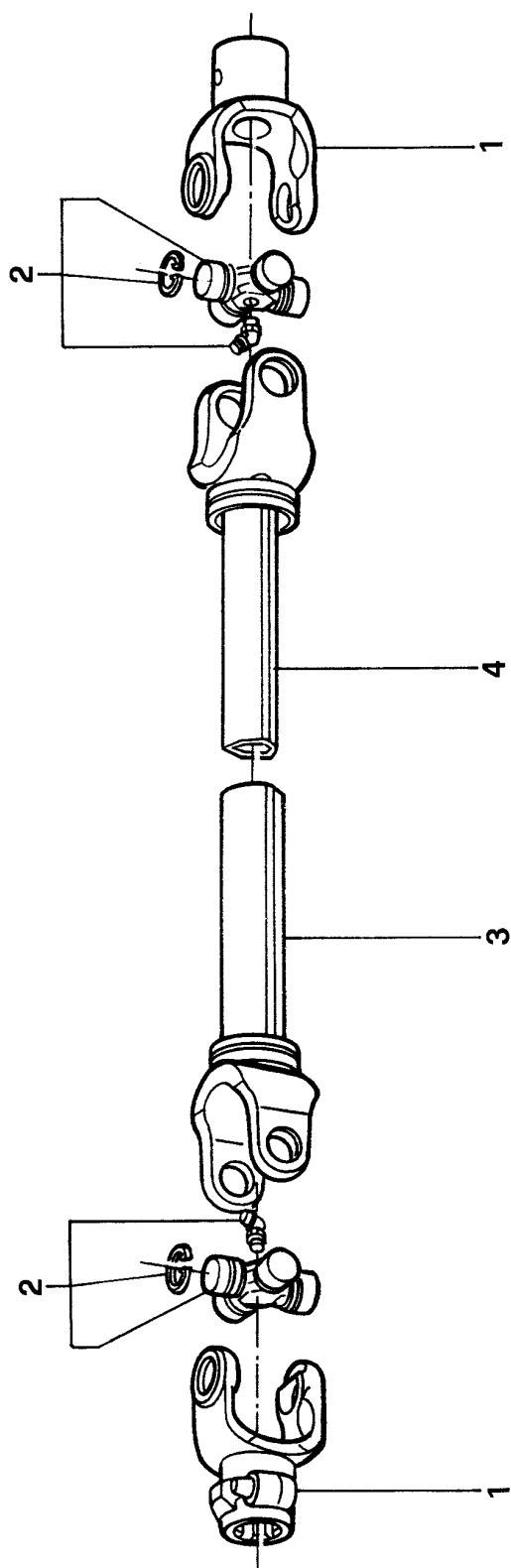
Rotomec: Hurricane 'H70'



Rotomec: Hurricane 'H70'

N.	COD.	DESCRIZIONE	DESCRIPTION	DESCRIPTION	BESCHREIBUNG	N.
1	0053325	Supporto attacco ruota	Wheel hitch support	Attache réglable roue	Radankupplungsauflage	2
2	0053031	Cavallotto	U Bolt	Barre d'ancrage	Bügelbolzen	4
3	0015218	Dado D.14 autobloccante	Locking nut D.14	Ecrou D.14 autobloquant	Mutter D.14	12
4	0053332	Collegamento telaio-ruota	Frame-wheel connection	Bras support de roue	Rahmen-Radanschluß	2
5	0032682	Vite TE 14x55	Bolt TE 14x55	Vis TE 14x55	Schraube TE 14x55	4
6	0001065	Ingrassatore	Grease fitting	Graisseur	Schmiernippel	2
7	0053341	Forcella porta ruota	Wheel yoke	Fourche pour roue	Gabel für Rad	2
8	0044128	Anello di spessoramento	Spacer washer	Anneau d'épaisseur	Distanzring	4
9	0005521	Spina elastica 10x45	Roll pin 10x45	Goupille élastique 10x45	Spannstift 10x45	2
10	0053352	Ruotina	Wheel	Roue	Rad	2
11	0044138	Distanziale ruotina	Wheel spacer	Entretoise roue	Rädchendistanzstück	2
12	0053356	Distanziale esterno	Outer spacer	Entretoise externe	Außendistanzstück	4
13	0044135	Vite TE 14x170	Bolt TE 14x170	Vis TE 14x170	Schraube TE 14x170	2
14	0030358	Dado D.14	Nut D.14	Ecrou D.14	Mutter D.14	2
15	0099198	Set ruote pivotanti	360° pivoting wheels	Set roues pivotantes	Drehrädersatz	1

Rotomec: Hurricane 'H70'



Rotomec: Hurricane 'H70'

N.	COD.	DESCRIZIONE	DESCRIPTION	DESCRIPTION	BESCHREIBUNG	N.
1	0240001E	Forcella P.D.F.	PTO Yoke	Fourche P.D.F.	Aufsteckgabel	2
2	014130E	Crociera	Cross & Bearing	Croisillon	Kreuzgelenk	2
3	1944040C	Tubo esterno	Outer tube	Tube externe	Außenrohr	1
4	1954042C	Tubo interno	Inner tube	Tube interne	Innenrohr	1
5	1784210C	Anello tubo esterno	Outer locking ring	Anneau tube externe	Außenrohrring	1
6	1784201C	Controcuffia tubo esterno	Outer tube rigid cone	Contre coiffe tube externe	Außenrohrgegentopf	1
7	1784203C	Cuffia esterna	Outer cone	Coiffe externe	Außenschutztopf	2
8	1784212C	Spina di bloccaggio	Pin	Goupille	Haltestift	2
9	016025E	Catenella	Chain	Chaîne	Kette	2
10	1773038C	Tubo protezione esterna	Female tube shield	Tube protection femelle	Außenschutzrohr	1
11	1872038C	Tubo protezione interna	Male tube shield	Tube protection mâle	Innenschutzrohr	1
12	1784202C	Controcuffia tubo interno	Inner tube rigid cone	Contre coiffe tube interne	Innenrohrgegentopf	1
13	1784211C	Anello tubo interno	Inner locking ring	Anneau tube interne	Innenrohrring	1
14	9404438C	Protezione completa	Complete shielding	Protection complète	Kompletter Schutz	1
	0500447	Cardano	PTO shaft	Arbre à cardan	Kardangelenk	